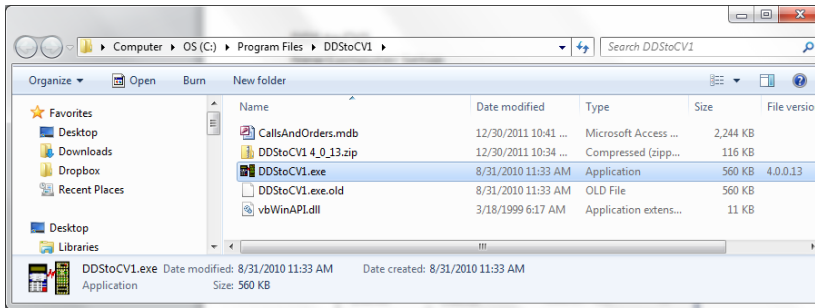


DDS to CV1

New Computer Setup

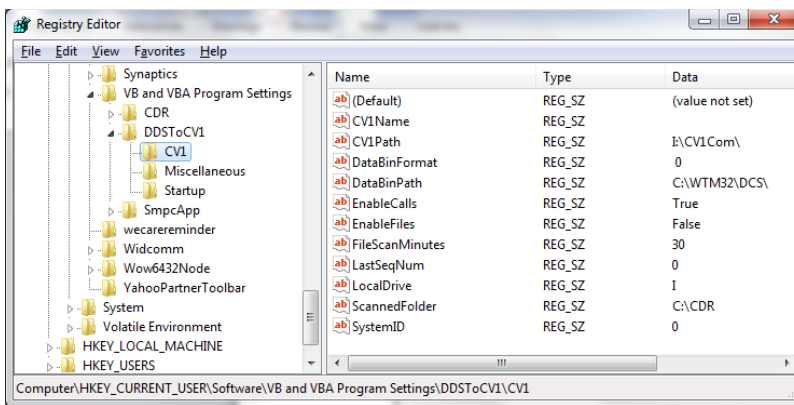
Program Files

The “DDStoCV1.EXE”, “CallsAndOrders.mdb” and “vbWinAPI.dll” files should be placed in the “c:\Program Files\DDStoCV1” folder or any folder you choose. The installation is a manual process. Updates are usually emailed as ZIP files that should be extracted and saved in the same location. The update will have a version number on the end, such as “DDStoCV1 1_4_13.exe”. After extracting it to the folder, rename the old one in case you need to revert back to it in the future. Then rename the new one to “DDStoCV1.exe”.



Registry Settings

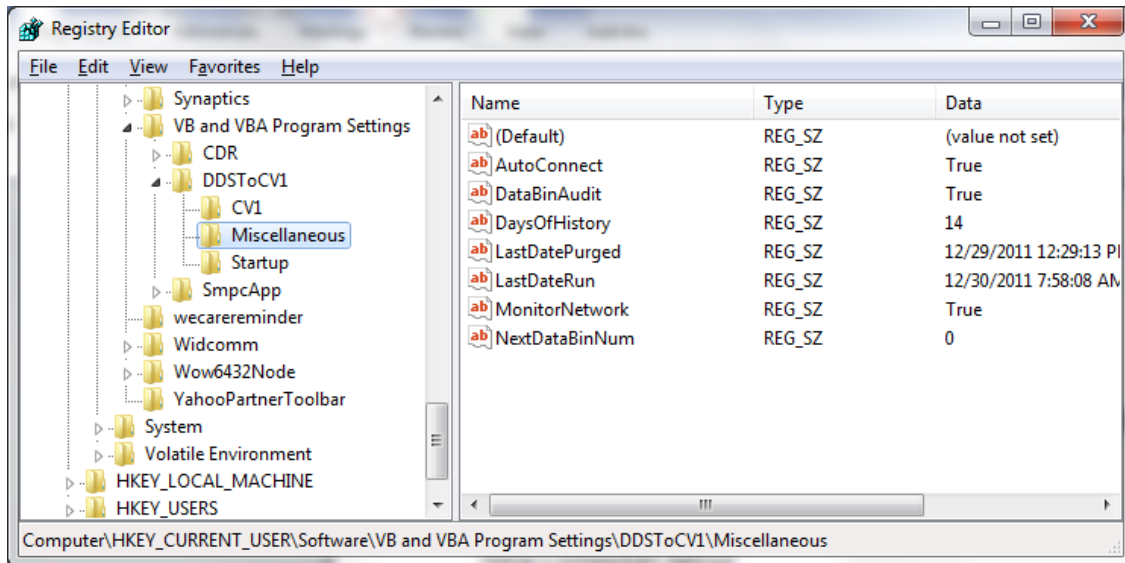
To access the registry settings, select Start and run the Regedit.exe program from the Run command. Expand HKEY_CURRENT_USER, SOFTWARE, VB AND VBA PROGRAM SETTINGS, DDSTOCV1. The following screen shots show the registry settings required to run the program.



- CV1 Name: This value can be anything. If blank, the initial settings screen will be displayed and reset your installation. It is expecting the WTM32 program to be at “c:\wtm32\dcs”. It also puts the “LNCHPD32.EXE” program in the “C:\windows\start menu\programs\startup”.
- CV1 Path:
- Data Bin Format: the format of the Databin files: 0-Default, 1-Smith and 2-Old CDR.
- Data Bin Path: This is the path to the Databin files created by the WTM32 program.
- Enable Calls: If checked, the databin.dat file will be processed every 10 seconds. Process includes: wait for the file to be unlocked, lock the file, read all calls from the file and store in the database, close the file, delete the file.
- Enable Files:
- File Scan Minutes: Number between 1 and 60.
- Last Seq Num: This is a number between 1 and 9900. It’s used in creating the RCV file and incremented by 1 after each file creation.
- Local Drive: This is the drive letter associated with the mapped drive to DAC. It’s usually set to “I”.
- Scanned Folder: This is the path used when processing Files.
- System ID: This is a number between 0 and 9 and represents the Calls program ID used in creating files. If more than one Calls program is running on a network, each installation needs to have separate System ID’s so the file being created don’t overwrite each other.

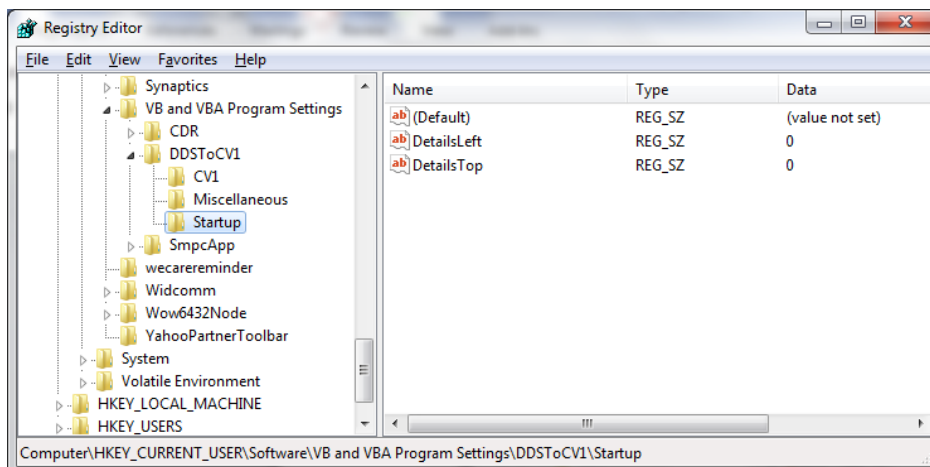
DDS to CV1

New Computer Setup



- Auto Connect: This is used in conjunction with the Monitor Network property. If a connection to the DAC folder is lost, the connection will automatically try to reconnect itself.
- Data Bin Audit: This value is checked when files are processed and if True, the Databin files will be moved to the Audit folder instead of deleted.
- Days of History: This is the number of days to keep orders in history. Orders that qualify for purging are bad calls and extracted calls that fall below the purge date (Current Date Less this value). This value can be set on the Properties screen of the application and should be between 2 and 60. Initially this value is 14.
- Last Date Purged: Calls get purged once per day and after the purge, this date gets updated.
- Last Date Run: This value gets updated every time the program starts up.
- Monitor Network: If this is checked, the network connection will be checked each time the calls are extracted. If a network connection can't be established, a message will be displayed on the screen. This value is set on the Properties screen.
- Next Data Bin Number: this number is used with the Data Bin Audit and contains the next number that will be used when moving a Databin file to the Audit folder in the format Databin000001 to Databin000999.

The entries under the Startup section indicate where the Calls program will initially reside on the desktop when running. Initially, these values are zero. The screen can be moved while it's running. The values are saved each time the Calls program exits.



DDS to CV1

New Computer Setup

Running the Application

Double-click the DDStoCV1.EXE file to run the application. If you get an error, try running the application as administrator by right-clicking on the EXE file and selecting "Run As Administrator".

Properties

System Info

Calls Program System ID: [Enter one digit from 0 to 9.]

Enable monitoring of orders received in calls

Enable monitoring of orders received in files

Number of Days of Call History to keep: [14 is the default, can go up to 99.]

Orders in Calls

DataBin Format:

DataBin.Dat Folder:

Orders in Files

Scanned Folder:

Minutes between scans for new files: (Range: 1 to 60 minutes)

Remote Order Folder on AS/400

DAC Name:

Local Drive:

DAC Folder:

Monitor Network

Automatically Reconnect Network Drive